

# LCRA

MARCH 31, 2025



ECONOMIC DEVELOPMENT CORPORATION

# PALESTINE GARDENS – PALESTINE GARDENS NORTH

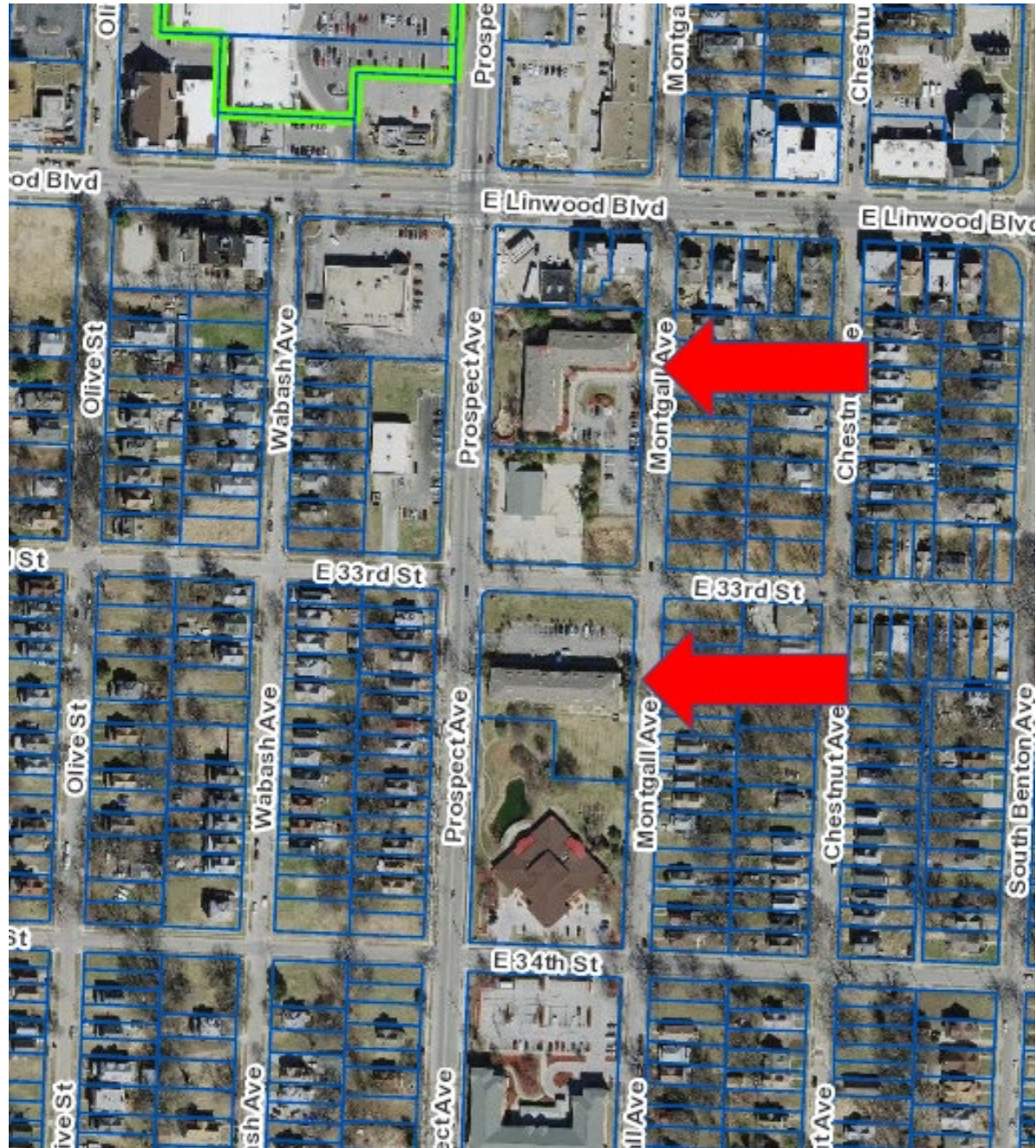
AFFORDABLE SENIOR HOUSING PROJECT  
33<sup>RD</sup> & MONTGALL URA



ECONOMIC DEVELOPMENT CORPORATION

# Palestine Gardens

33<sup>rd</sup> & Montgall URA  
Council District 3







# 3855 WOODLAND

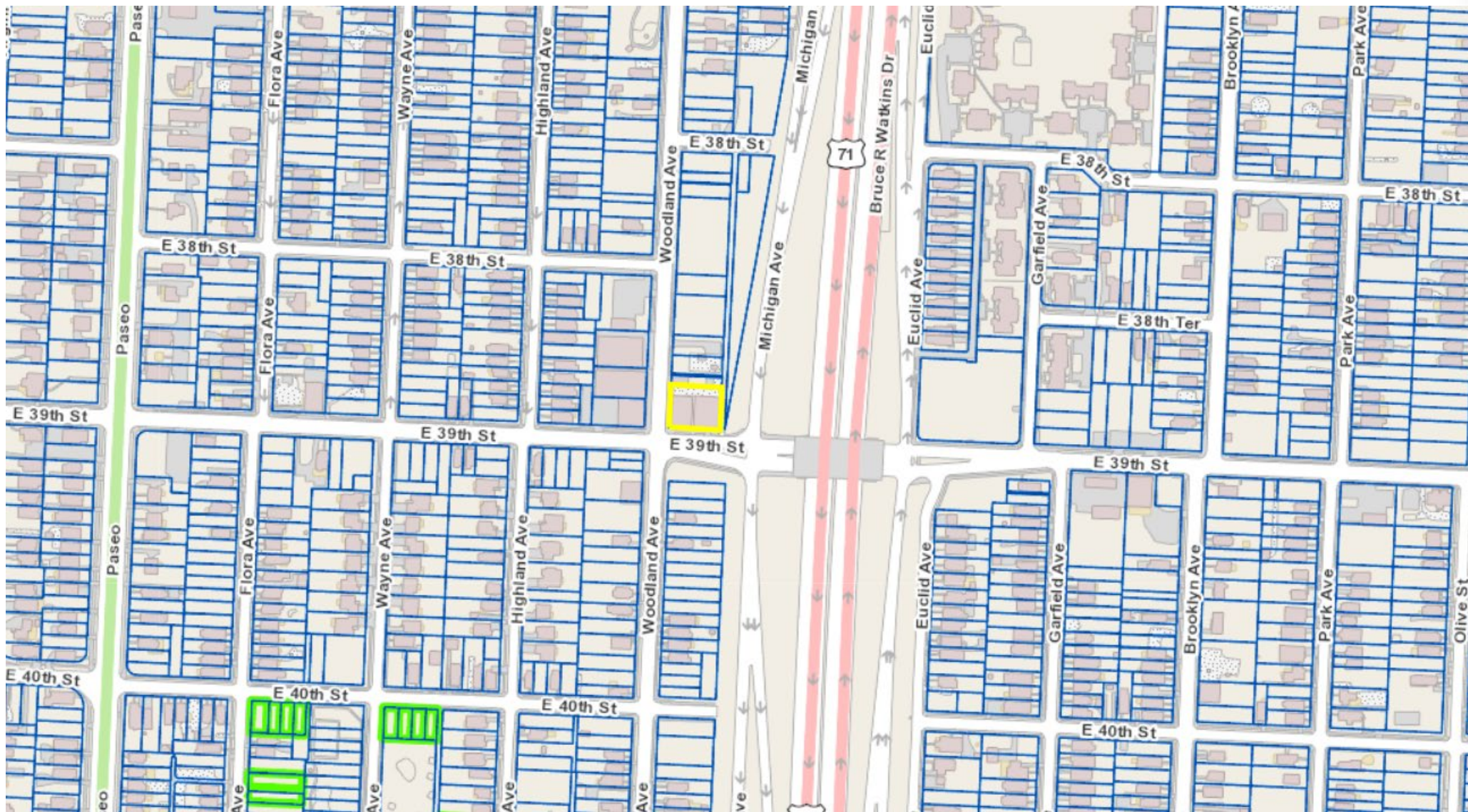
HMC HOLDINGS, LLC  
OAK PARK URA



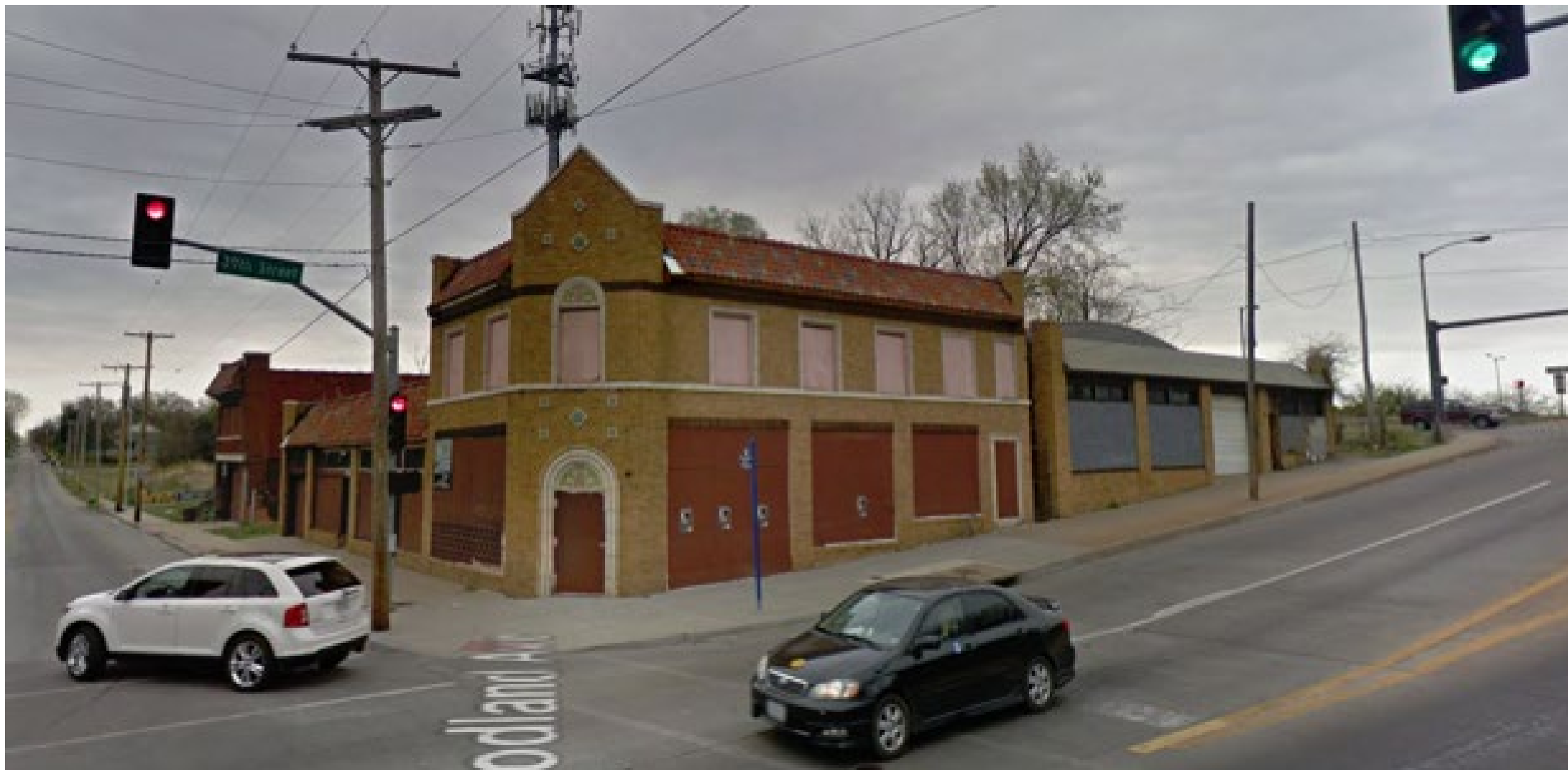
ECONOMIC DEVELOPMENT CORPORATION



3855 Woodland / Incentive Area: Oak Park URA / Council District: 3



3855 Woodland / Incentive Area: Oak Park URA / Council District: 3



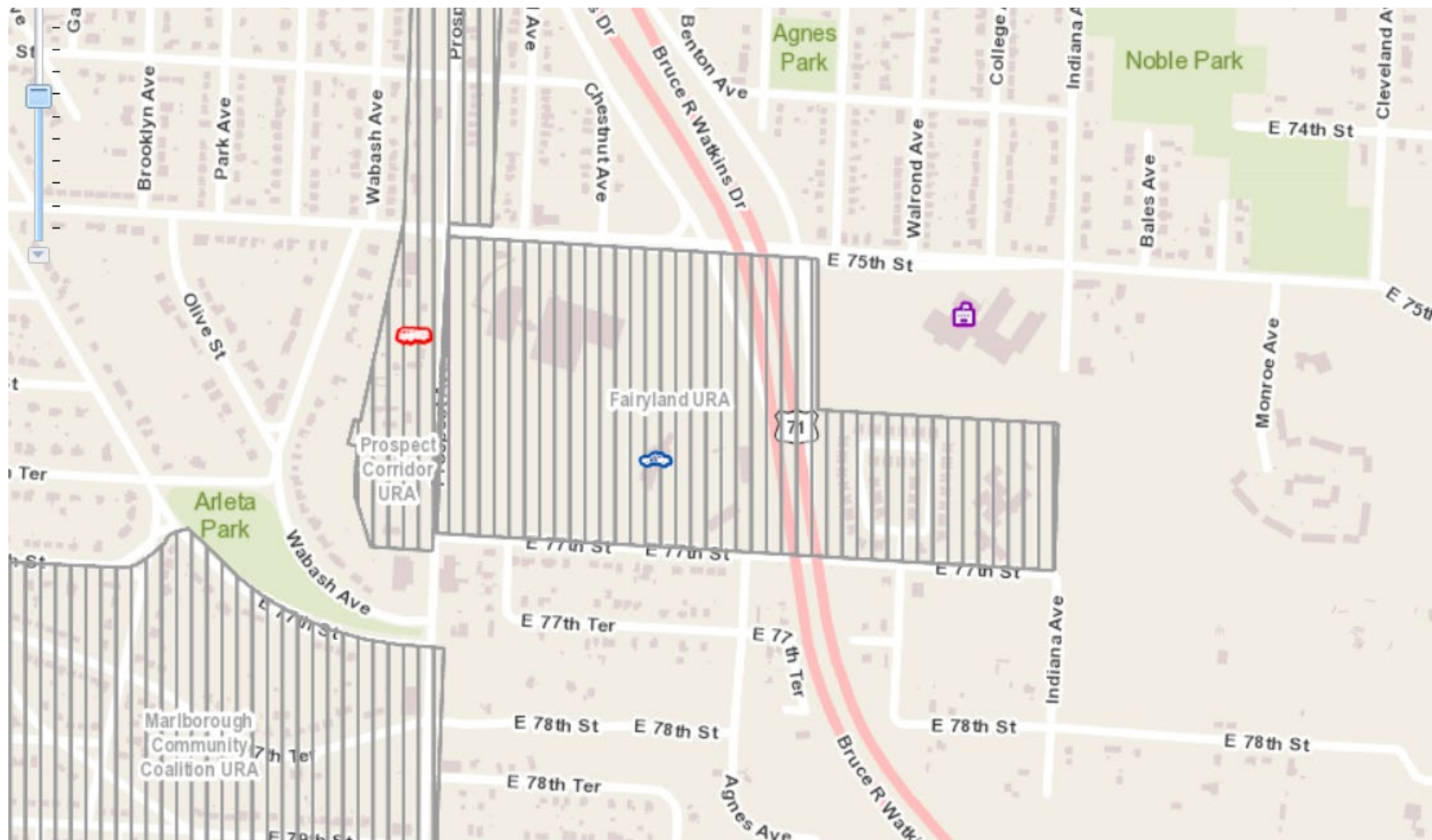
# FAIRYLAND PARK URA



ECONOMIC DEVELOPMENT CORPORATION



75<sup>th</sup> & Prospect / Fairyland Park URA / Council District: 5



# INFILL HOUSING #126-135 URA



ECONOMIC DEVELOPMENT CORPORATION

- 126-1315 E. 41<sup>st</sup>
- 127-A-3616 Paseo
- 127-B-3620-22 Paseo
- 127-C-3624 Paseo
- 127-D-3628 Paseo
- 128-7215 Bales
- 129-A-7224 Askew
- 129-B-7228 Askew
- 129-C-3522 E. 73<sup>rd</sup>







- 130-7341 Olive**
- 131-7231 Park**
- 132-2327 Montgall**
- 133-2825 E. 21<sup>st</sup>**
- 134-2140 Kansas**
- 135-2635 Lockridge**