

LCRA

August 27, 2024



ECONOMIC DEVELOPMENT CORPORATION

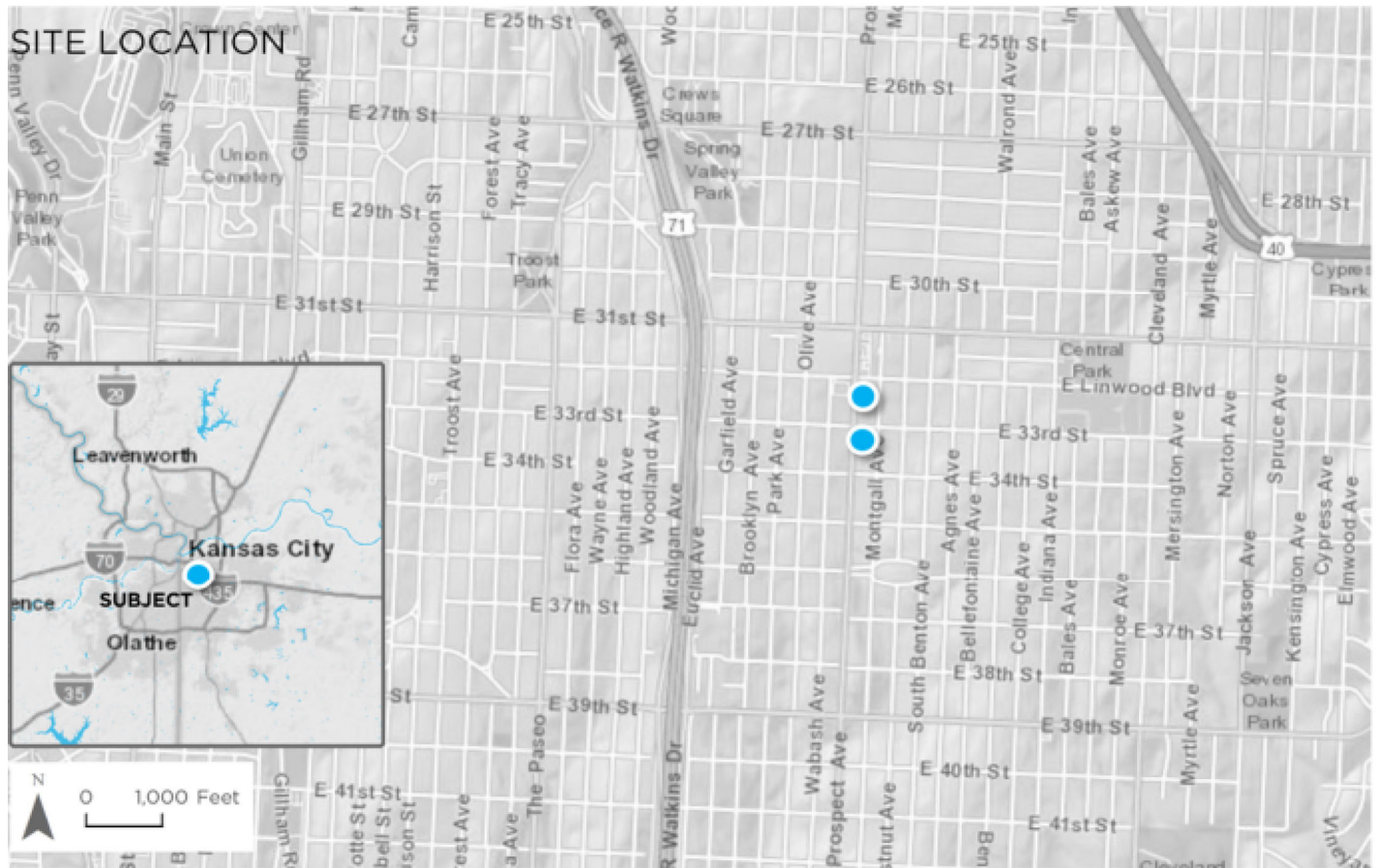
PALESTINE GARDEN APTS.

SUR MHFW#GR FX P HQWV#
DP HQG P HQW



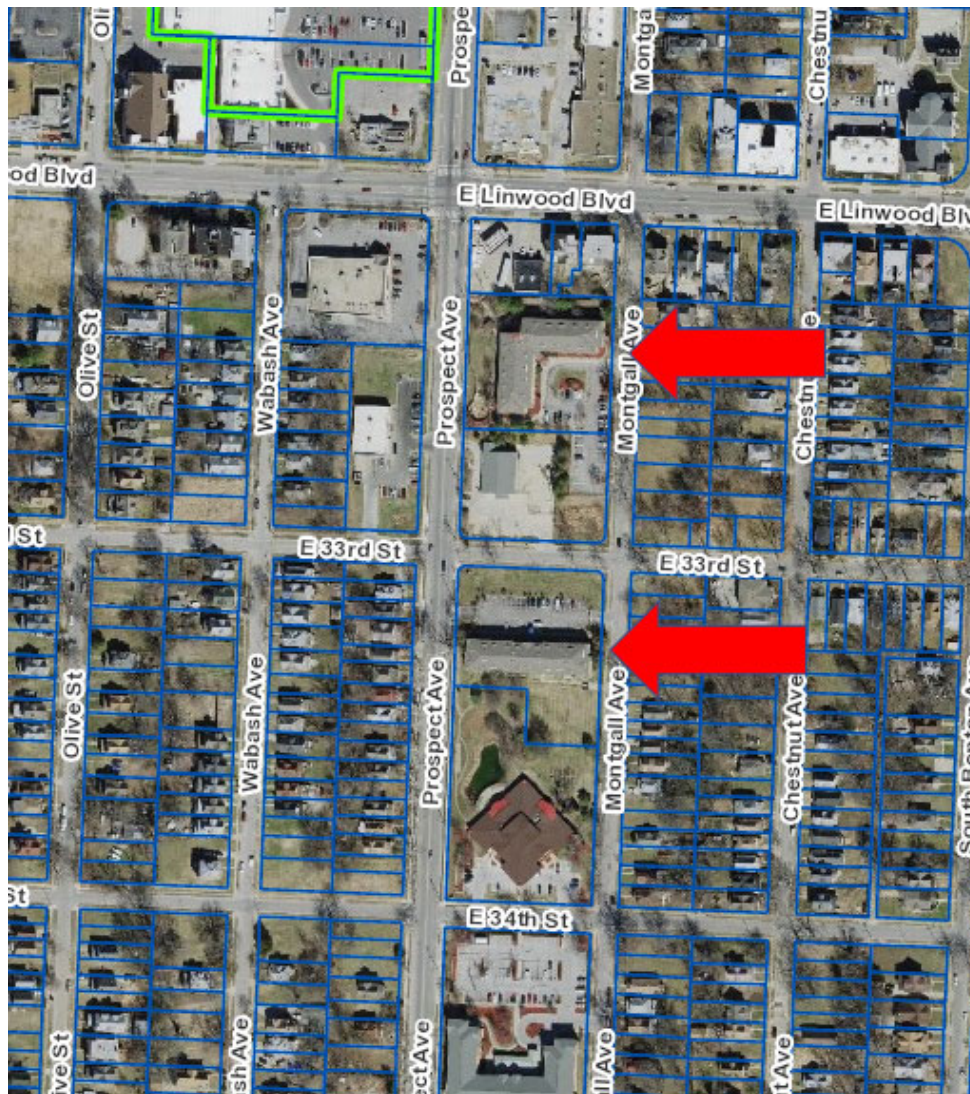
ECONOMIC DEVELOPMENT CORPORATION

33rd & Montgall URA
Council District: 3



Palestine Gardens/Palestine Gardens North
Development Location Map

Palestine Gardens





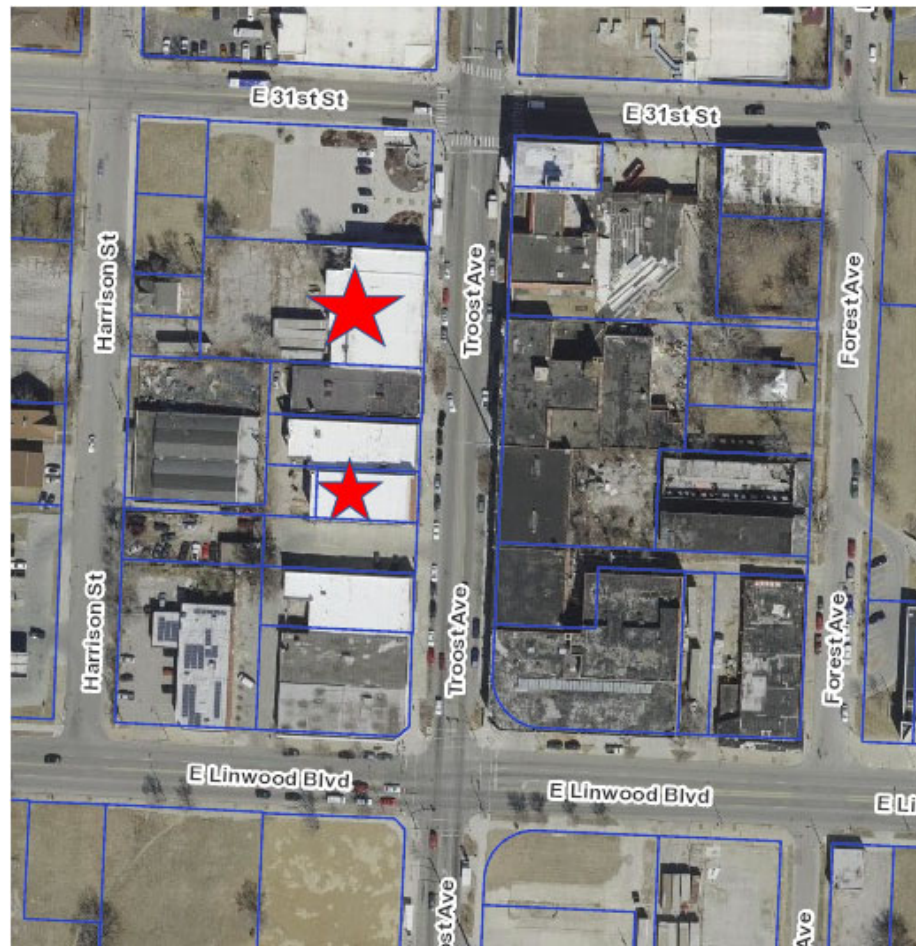
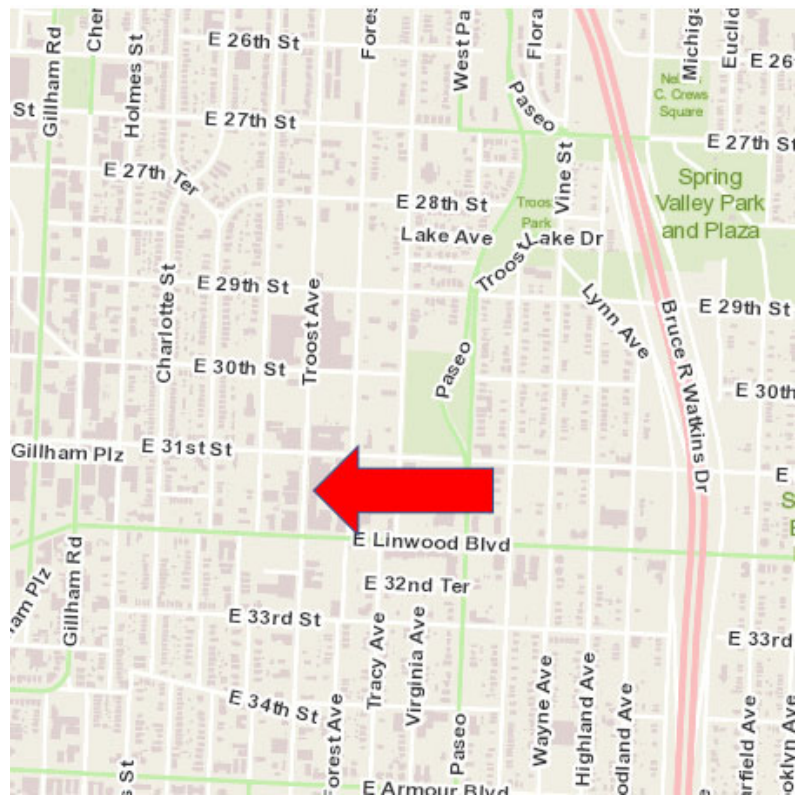
Palestine Gardens



LEGACY CROSSING DEVELOPMENT – BAKER SHOE BUILDING – 3112 TROOST

SDUWIDO#DVVIJ Q P HQW#R I#
UHGHYHOR SP HQW#R QWUDEFW

Longfellow Dutch Hill URA Council District: 4





Baker Shoe Building - 3112- 3116 Troost

HABITAT FOR HUMANITY SCATTERED – SITE I URA

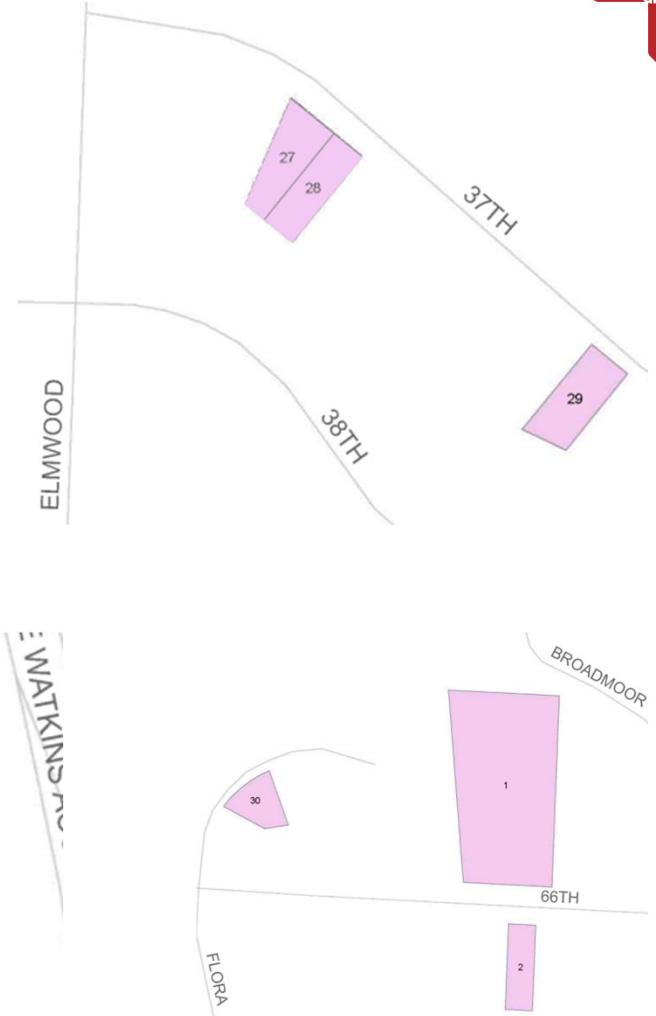
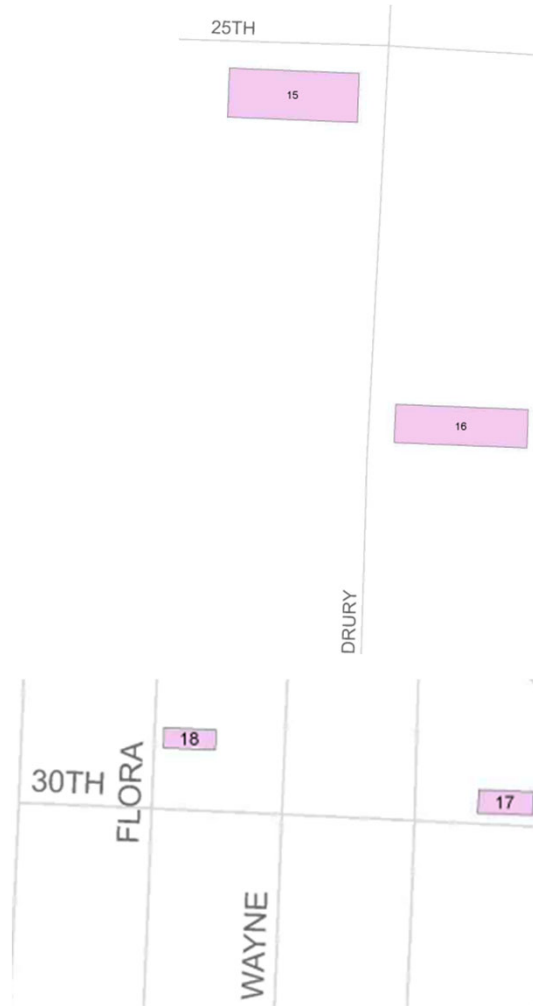
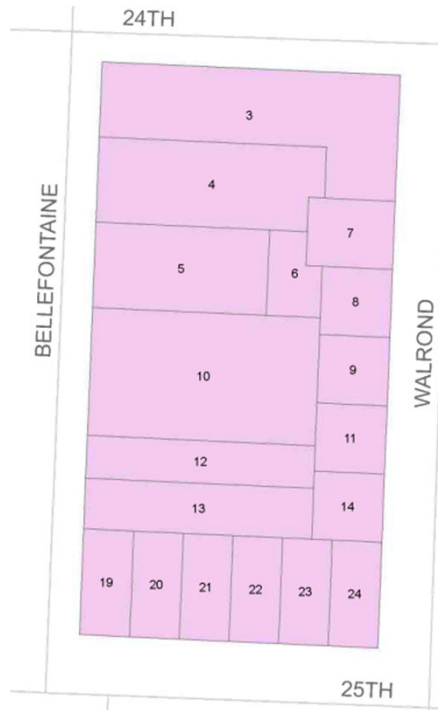
SECOND AMENDMENT TO PLAN



ECONOMIC DEVELOPMENT CORPORATION

HABITAT FOR HUMANITY SCATTERED – SITE I URA

Council District: 3 and 5



LONGFELLOW – DUTCH HILL URA

FIRST AMENDMENT TO PLAN



ECONOMIC DEVELOPMENT CORPORATION

LONGFELLOW – DUTCH HILL URA

Council District: 4

