

# LCRA

OCTOBER 11, 2023



ECONOMIC DEVELOPMENT CORPORATION

# 3. COLUMBUS PARK

COLUMBUS PARK/GUINOTTE MANOR PHASE III



ECONOMIC DEVELOPMENT CORPORATION

2015ED042508-2

# FINAL PLAT OF COLUMBUS PARK PHASE 1

A SUBDIVISION IN SECTION 32, TOWNSHIP 50 NORTH, RANGE 33 WEST, KANSAS CITY, JACKSON COUNTY, MISSOURI

TRAVERSE TABLE			
Q-10	8 471537.4	1 309640.0	1 019752.6
POS	8 471537.4	1 309640.0	1 019752.6

EXISTING STREET GRADES			
STREET	NO. OF LOTS	DATE	GRADE
2ND STREET (SEASD ST. TO CAMPBELL ST.)	11000	JUN. 15, 1913	
3RD STREET (THOMAS ST. TO HOLLAND ST.)	20000	JUN. 15, 1913	
4TH STREET (THOMAS ST. TO CAMPBELL ST.)	11000	JUN. 15, 1913	
5TH STREET (THOMAS ST. TO CAMPBELL ST.)	20000	JUN. 15, 1913	
6TH STREET (THOMAS ST. TO CAMPBELL ST.)	20000	JUN. 15, 1913	
7TH STREET (THOMAS ST. TO CAMPBELL ST.)	20000	JUN. 15, 1913	
8TH STREET (THOMAS ST. TO CAMPBELL ST.)	20000	JUN. 15, 1913	
9TH STREET (THOMAS ST. TO CAMPBELL ST.)	20000	JUN. 15, 1913	
10TH STREET (THOMAS ST. TO CAMPBELL ST.)	20000	JUN. 15, 1913	
11TH STREET (THOMAS ST. TO CAMPBELL ST.)	20000	JUN. 15, 1913	
12TH STREET (THOMAS ST. TO CAMPBELL ST.)	20000	JUN. 15, 1913	
13TH STREET (THOMAS ST. TO CAMPBELL ST.)	20000	JUN. 15, 1913	
14TH STREET (THOMAS ST. TO CAMPBELL ST.)	20000	JUN. 15, 1913	

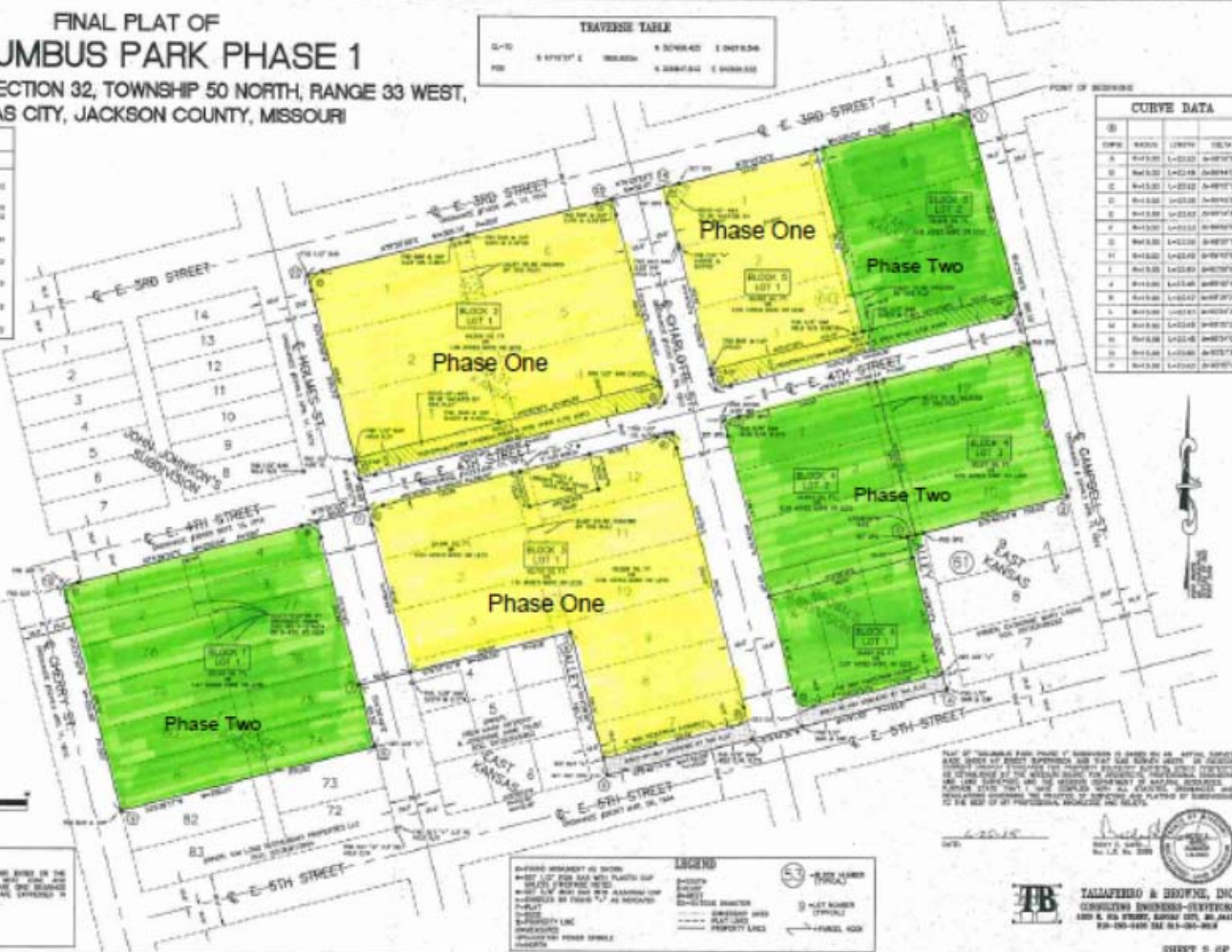
CURVE DATA			
NO.	CHORD	LENGTH	DELTA
1	1443.00	1443.00	90°00'00"
2	1443.00	1443.00	90°00'00"
3	1443.00	1443.00	90°00'00"
4	1443.00	1443.00	90°00'00"
5	1443.00	1443.00	90°00'00"
6	1443.00	1443.00	90°00'00"
7	1443.00	1443.00	90°00'00"
8	1443.00	1443.00	90°00'00"
9	1443.00	1443.00	90°00'00"
10	1443.00	1443.00	90°00'00"
11	1443.00	1443.00	90°00'00"
12	1443.00	1443.00	90°00'00"
13	1443.00	1443.00	90°00'00"
14	1443.00	1443.00	90°00'00"

STATE PLANE COORDINATES IN METERS		
NO.	NORTHING	EASTING
1	500617.000	848803.000
2	500713.000	848803.000
3	500809.000	848803.000
4	500905.000	848803.000
5	501001.000	848803.000
6	501097.000	848803.000
7	501193.000	848803.000
8	501289.000	848803.000
9	501385.000	848803.000
10	501481.000	848803.000
11	501577.000	848803.000
12	501673.000	848803.000
13	501769.000	848803.000
14	501865.000	848803.000

BATCH LEGEND	
[Pattern]	REWORK TO BE DONE BY THIS PLAT
[Pattern]	REWORK TO BE DONE BY THE JOB



**STATE PLANE NOTE**  
 COORDINATES AND BEARINGS SHOWN ON THIS PLAT WERE OBTAINED BY THE MISSOURI STATE PLANE SURVEYING SYSTEM WITH STATE PLANE AND STATE PLANE COORDINATE SYSTEMS. ALL BEARINGS ARE IN DEGREES AND ALL DISTANCES ARE IN METERS.  
 REFERENCE STATION: 1014 (2004 BARRAGE)  
 GRID FACTOR: 0.9999992  
 CONVERSION: METERS TO FEET: 3.2808399  
 METERS TO FEET: 3.2808399



LEGEND	
[Symbol]	PROPERTY LINES
[Symbol]	RIGHT-OF-WAY LINES
[Symbol]	PLAT NUMBER
[Symbol]	PLAT NUMBER (OPTIONAL)
[Symbol]	FIELD NO.
[Symbol]	SECTION CORNER
[Symbol]	SECTION CENTER
[Symbol]	SECTION CORNER
[Symbol]	SECTION CENTER
[Symbol]	SECTION CORNER
[Symbol]	SECTION CENTER
[Symbol]	SECTION CORNER
[Symbol]	SECTION CENTER

TALAFERRO & BROWN, INC.  
 CONSULTING ENGINEERS-SURVEYORS  
 1800 & 8th STREET, KANSAS CITY, MO 64108  
 816-251-5100 FAX 816-251-5101

Columbus Park URA Council District: 4

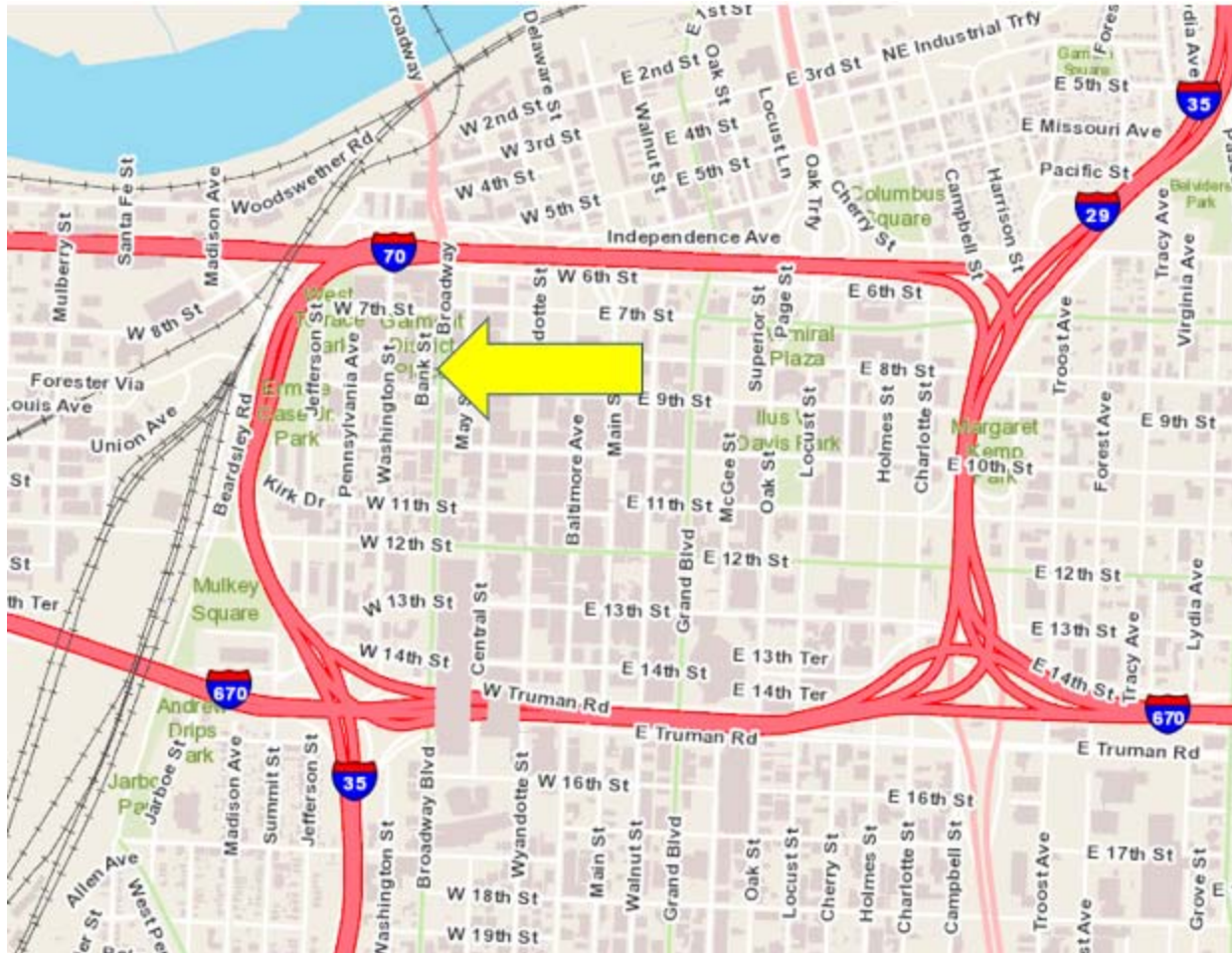
## 4. 802 BROADWAY

HISTORIC REHAB MIXED-USE  
PROJECT



ECONOMIC DEVELOPMENT CORPORATION

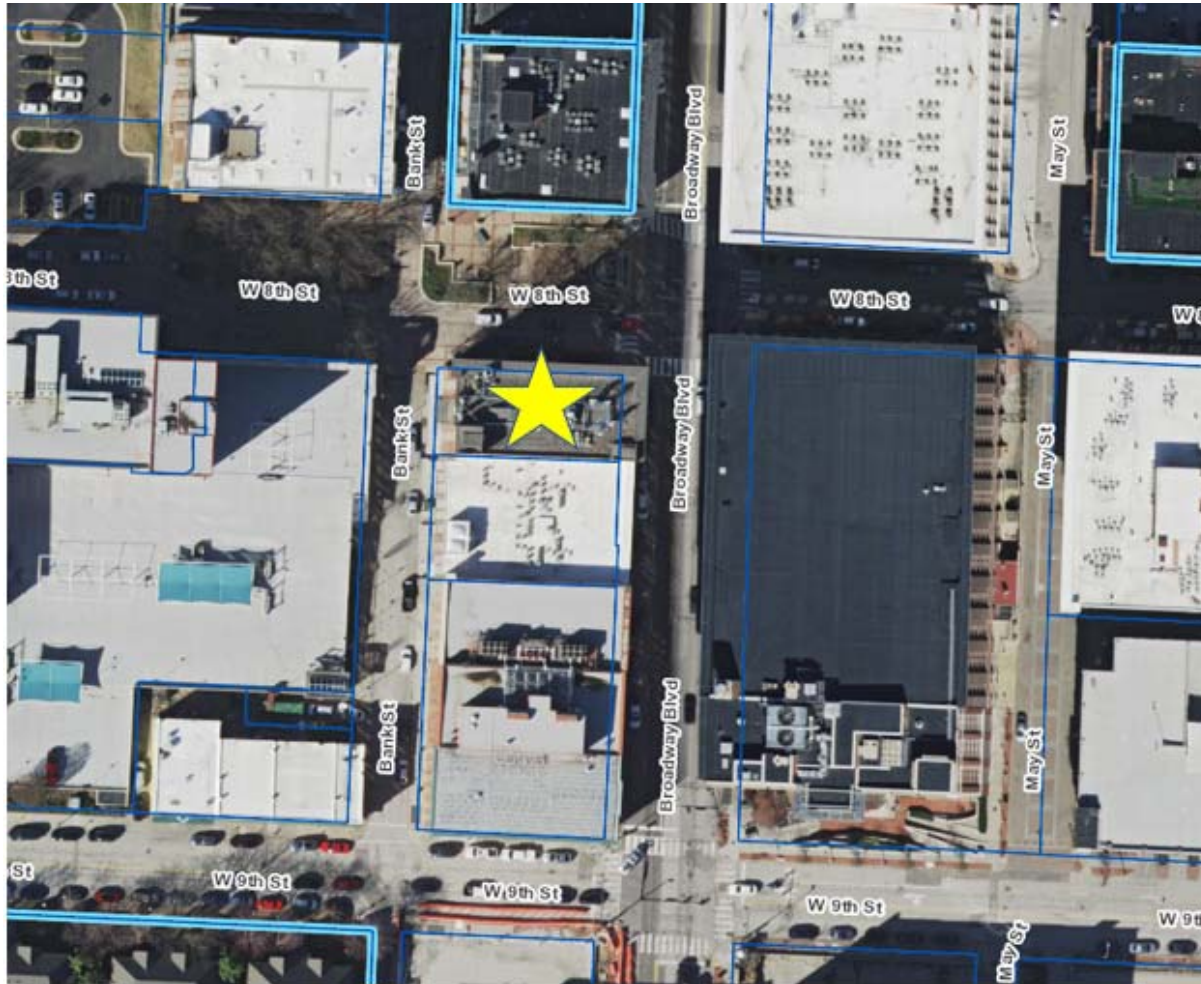
# 802 BROADWAY



Central Bus District URA  
Council District: 4



# 802 BROADWAY



# 802 BROADWAY

LET'S  
GROW **KC**  
**MO**



**5-A-1.**  
**2800 – 2804 PROSPECT**  
**AVENUE**

CITY PROPERTY TRANSFER  
TO LCRA

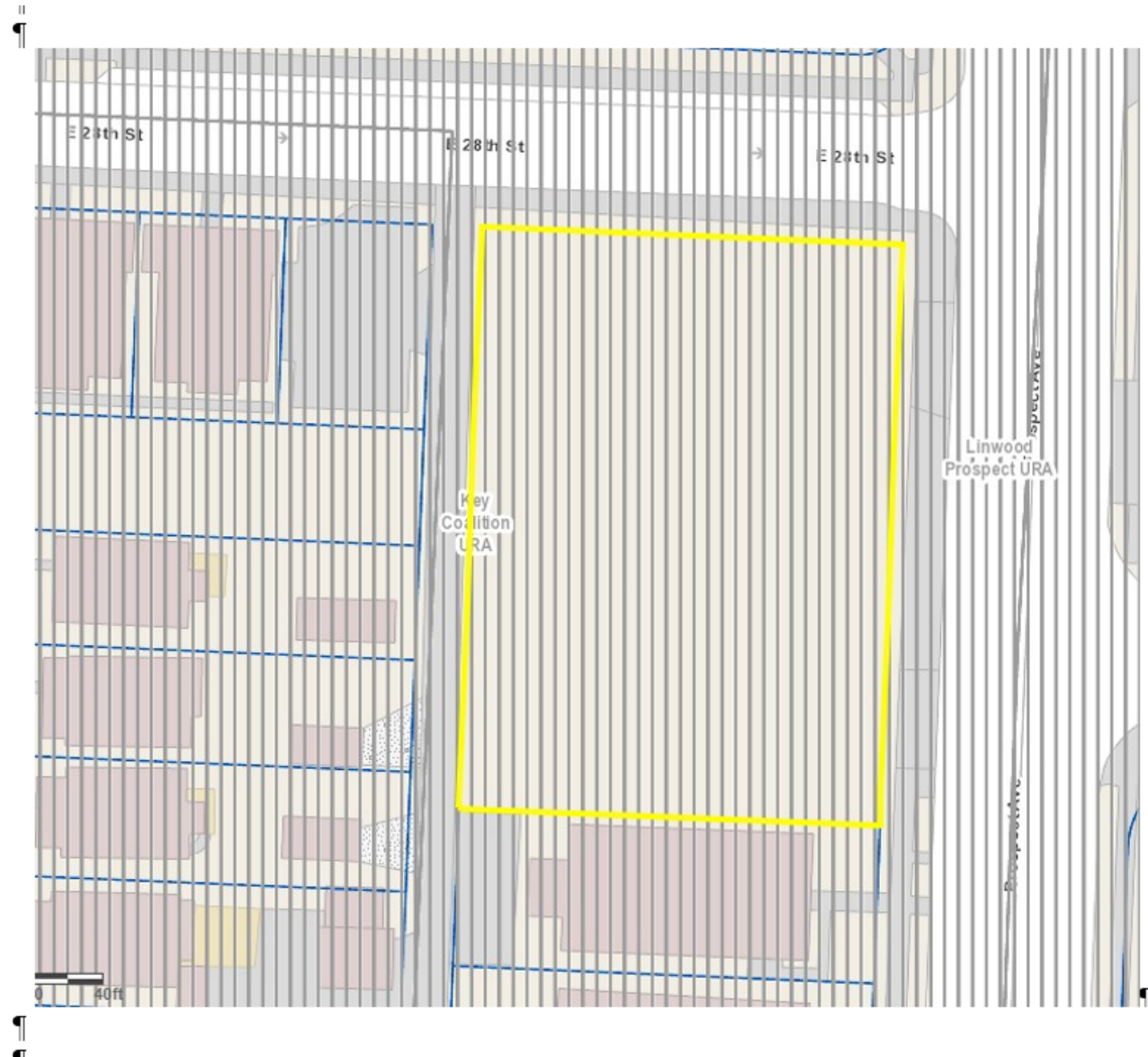


ECONOMIC DEVELOPMENT CORPORATION

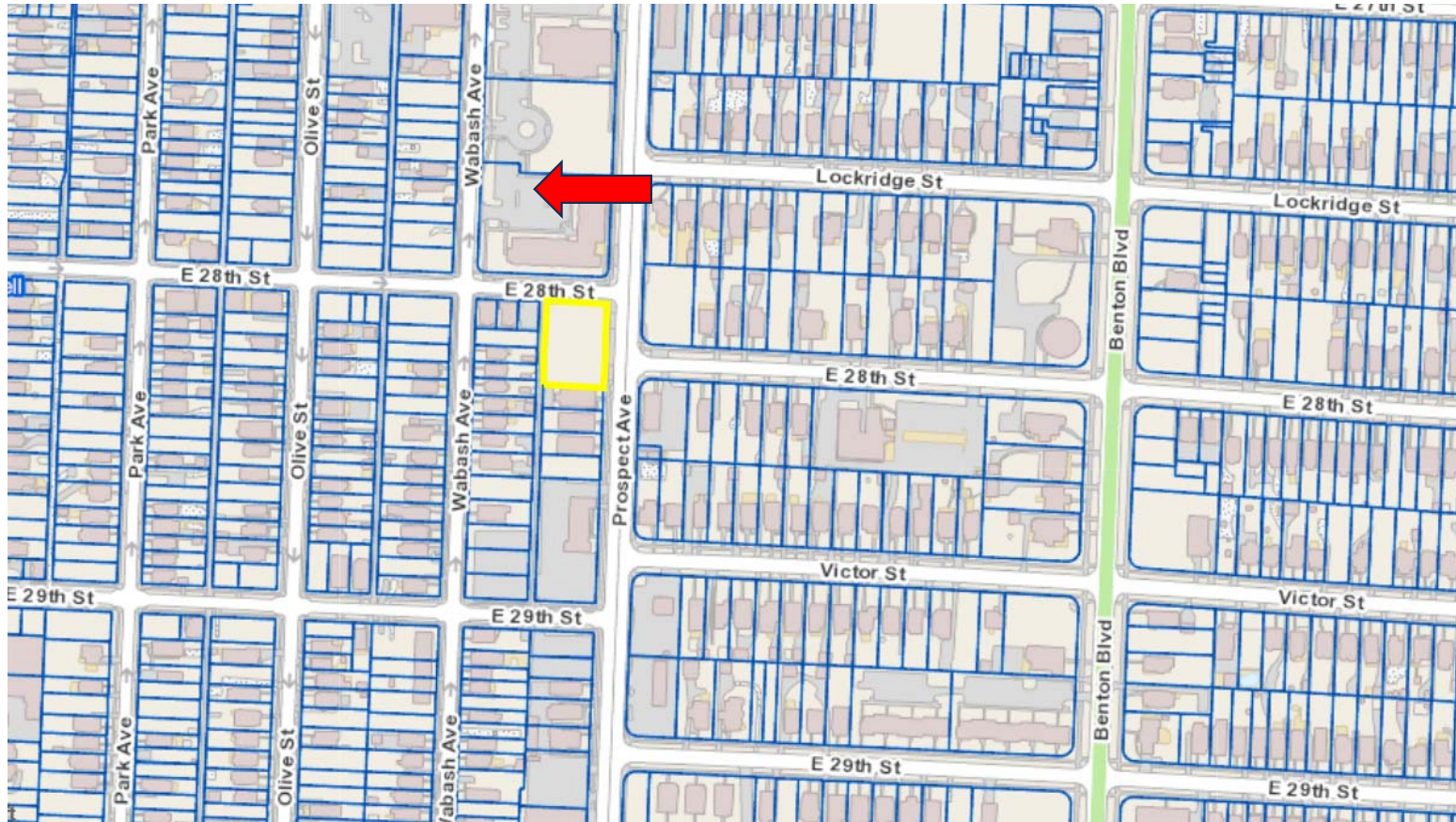


# 2800-04 PROSPECT

Key Coalition URA  
Council District: 3

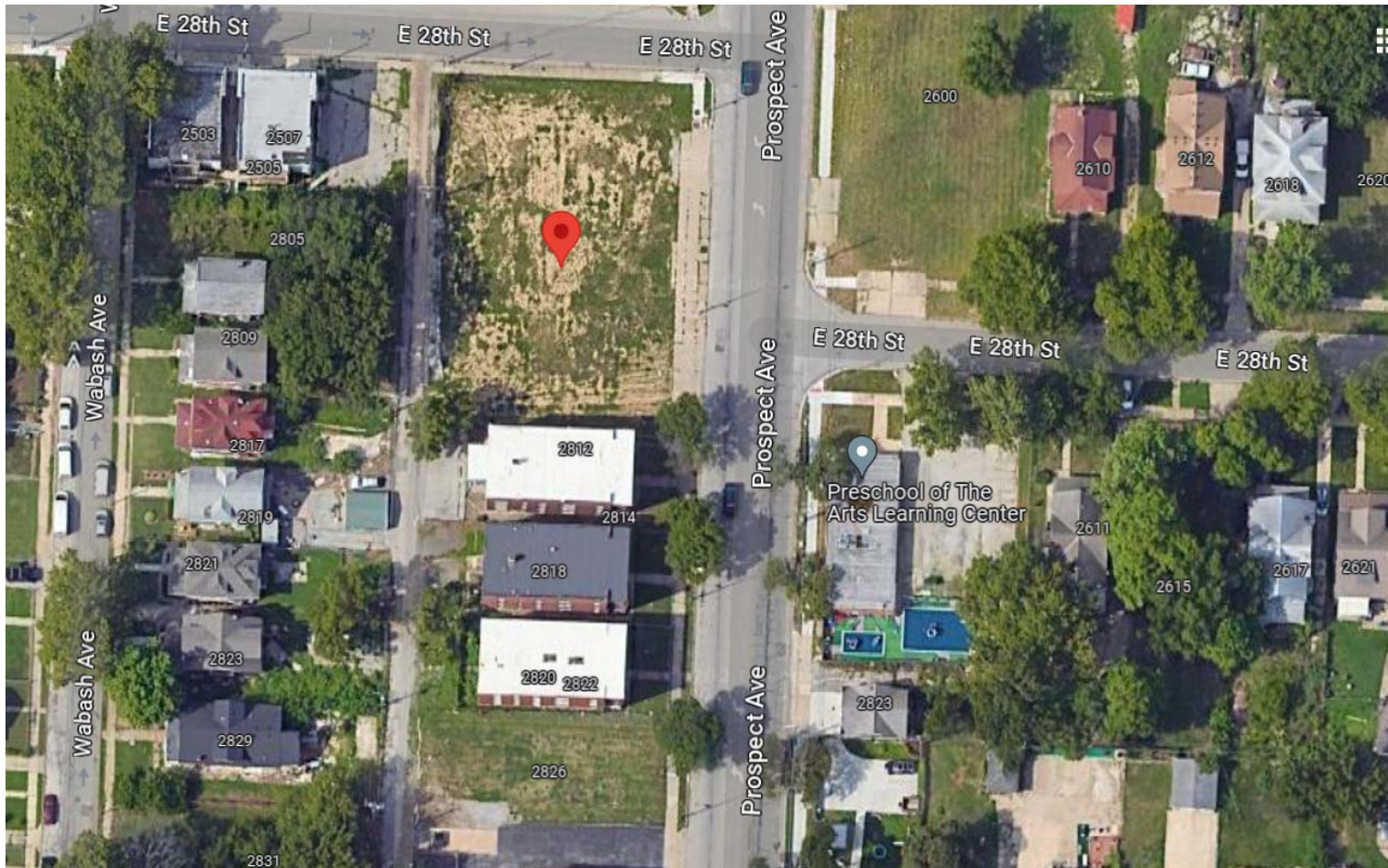


# 2800 – 2804 PROSPECT





# 2800 – 2804 PROSPECT AVENUE



**5-A-2.**  
**2549 CHARLOTTE**

SECOND TAX ABATEMENT



ECONOMIC DEVELOPMENT CORPORATION



# 2549 CHARLOTTE

Hospital Hill II URA  
Council District 4

2009-2018 – 1<sup>st</sup> TA  
2023-2032 – 2<sup>nd</sup> TA

